

TYPE 1 ENCLOSED VESSELS

CLASS 1A - Flasks

CLASS IB - Short necked flasks

CLASS 1C - Two handled flagons

CLASS ID - Pinch-necked flagons

CLASS IE - Single handled flagons

Class 1A Flask with tall, narrow neck.

1A1 Ring necked flask

1A1.1 Upchurch F2/lb. RW967. 180/200-270/300. Probably late second onwards resembling colour coated wares (Swan 1978, 47 plate 32). Examples at Ospringe (49, 50, 68) are dated from start of the third century. Rare.

1A2 Flask with imitation of nipple mouth.

1A2.1 Upchurch S1/lb brown. MK, purchased. 100-200. Unique.

1A3 Flask with disc mouth

1A3.1 Upchurch N4/lb white/pink. JD. 90-140. Rare.

1A4 Flask with slashed cordons.

1A4.1 Upchurch N2/lb. RV 965. 70-150. Rare.

1A5 Squat, barrel shaped flask (170-260).

1A5.1 Upchurch N2/lb. EF. 180/190-250/260, Ospringe 335. Rare.

Class IB Flask with short neck.

1B1 With tall body.

1B1.1 Upchurch N2/lb. BM 55 1-5-132, Lower Halstow. 100-180. Ospringe 109. Rare.

1B1.2 Upchurch N2/lb. BM 56 7-1-180, London. 100-180. Rare.

1B2 With pinched cordons.

1B2.1 Upchurch N2/lb. BM 83 12-13-384, Boxted. 90/120-180/220. Similar vessels occur on the Maidstone Mount villa in the early third century and in Canterbury in the second. Rare.

1B3 With double neck cordon.

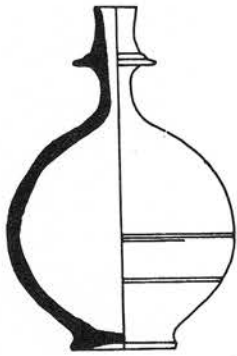
1B3.1 Upchurch N2/lb. RW 321. 90/120-170/190. Frequently assigned this date at Upchurch, Canterbury and Ospringe (33, 119, 346) and thought to be derived either directly or through intermediaries from silver vessels. Common.

1B3.2 Upchurch K2/lb. RT 119. 90/120-170/190. Common.

1B4 Squat with wide neck.

1B4.1 Upchurch S1/lb. RT 120, Rainham. 70-110. Common.

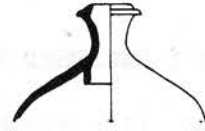
1B4.2 Upchurch HI/lb. RP 605. 70-110. Waster. Hume 1954, 85, no 10. Hume puts the date later, but there is heavy Belgic influence. Common.



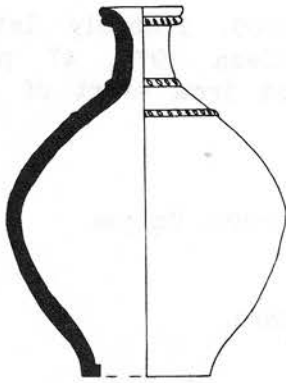
1A1.1



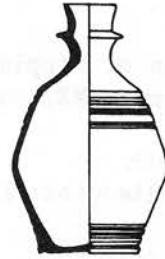
1A2.1



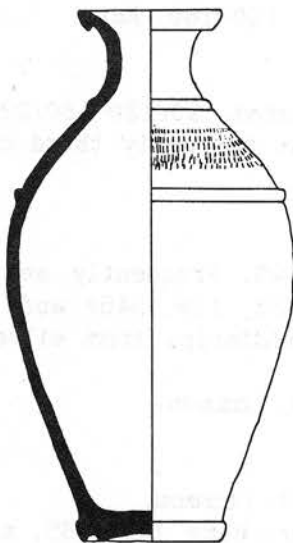
1A3.1



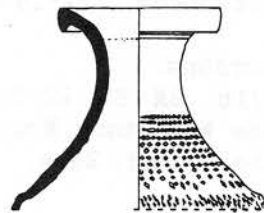
1A4.1



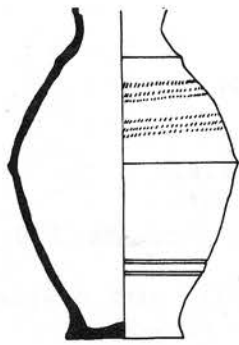
1A5.1



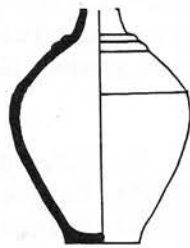
1B1.1



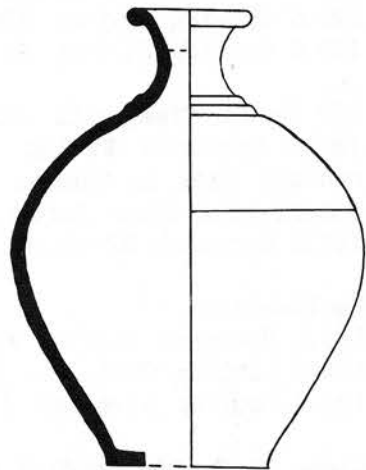
1B1.2



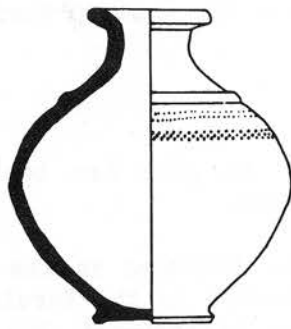
1B2.1



1B3.1



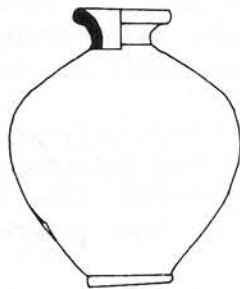
1B3.2



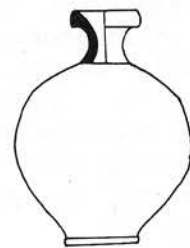
1B4.1



1B4.2



1B5.1



1B5.2

1B5 With smooth neck plus a footring,
1B5.1 Shorne S1/5b. MA. 120-200. Rare.
1B5.2 Upchurch N4/1s white/orange-pink. MA. 120-200. Rare.

1B6 With single cordon and normally with a sine wave on neck. Under 7cms rim diameter, of variant 3A5. (150/180-230).

1B6.1-4. Cooling S1/6bs. MC. 170/190-210/230. Common.

1B6.5 Cooling S1/6bs. MD. 150-200. Rare.

1B6.6 Cooling S1/6bs. MA. 170-230. Ospringe 94 is dated 160-190. Rare.

1B7 Small, fine, with cordons and rouletting.

1B7.1 Upchurch N1/lbs. MA. 120/150-180/190. A general mid-late second century date is common when associated with samian (Ospringe 115, 395). Occurs with other forms of this series of similar date. Rare.

1B7.2 Upchurch S2/lb. HC, Higham Lane grave. 120/150-180/190. Rare.

Unclassified.

1B0.1 Upchurch S1/lbs. MK, Strood 5, 13. 120-200. Unique.

1B0.2 Cooling S5/6. MC. 170/190-210/230. Unique.

1B0.3 Cooling S1/6. MC. 170/190-210/230. Unique.

Class 1C Double handled flagons.

No double handled flagons have yet been identified in the region, but would not be out of keeping with the Claudio-Neronian manufacture around Hoo island.

Class ID Pinch-necked flagons.

A single handled vessel where the neck has been pinched to produce a figure-of-eight or trefoil rim plan.

1D0.1 Upchurch N2/1. RW. 70-150. Produced in the Flavian-Trajanic period at Brockley Hill and up to 150/160 in the Verulamium region (Southwark 1C1A). Kentish examples include Richborough 206 and 207. As the only known example of its class, this vessel is possibly exotic in origin, although was found in Stangate Creek. Unique.

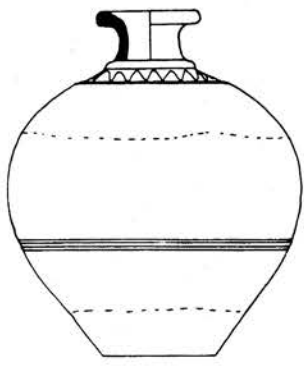
Class IE Single handled flagons.

1E1 Ring mouthed, flaring (70/80-150/190).

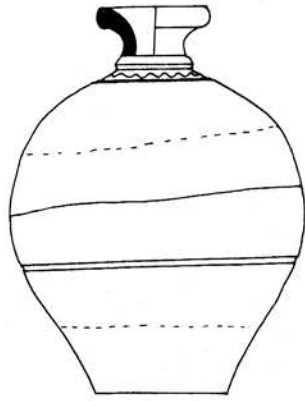
1E1.1 Upchurch N4/1s white/orange-pink. RW. 70/80-140/150. Of continental origin and late Flavian-Hadrianic date (Southwark 1B5). Later first century at Richborough, Camulodunum (154) and Canterbury. One sherd found at Mumrills. Common.

1E1.2 and 3 Upchurch S4/1s white/orange-pink. JD. 70/80-140/150. of Gillam 8, Ospringe 242, 595. Canterbury Defences fig 76, 18.

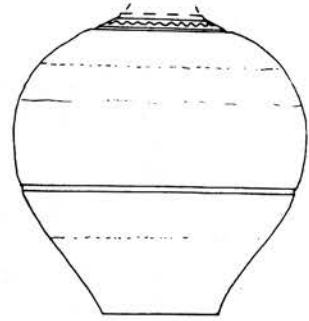
1E1.4 Cooling S1/6. orange. EF. 140-190. This is the latest example of this variant, the rim flattening as time progressed. Richborough 72 and 148. Rare,



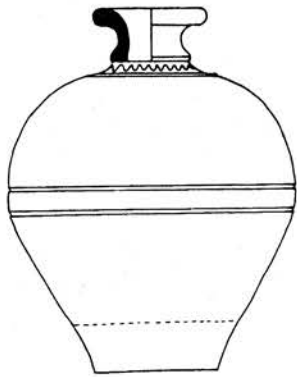
1B6.1



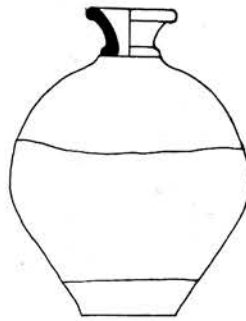
1B6.2



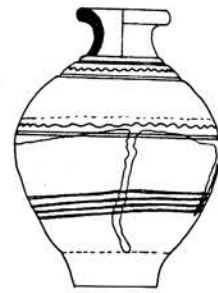
1B6.3



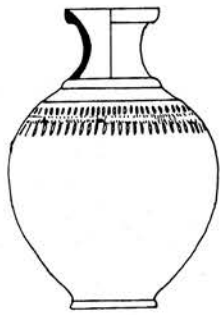
1B6.4



1B6.5



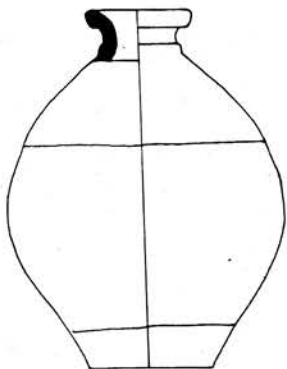
1B6.6



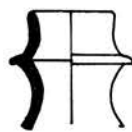
1B7.1



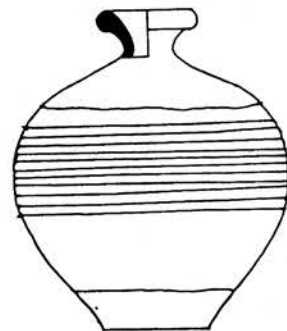
1B7.2



1B0.1



1B0.2



1B0.3

1E2 Ring mouthed, upright rim (100/120-190/200).

1E2.1 Upchurch N4/ls white/orange-pink. JD. 100/120-150. Southwark 1B1. Rare.

1E2.2 Upchurch N4/ls white/orange-pink. JD. 100/120-150. Detsicas (1966, 59) puts the type around AD 65 whereas Hull (Cam. 156) gives it a Trajanic-Hadrianic date. Rare.

1E2.3 Upchurch H4/ls white/orange-pink. JD. 120/130-190/200. This is the most usual variant of 1E2, probably replacing 1E1 around 120/130 (Southwark 1B8) and known up to AD 190 (Cam 156a). Common.

1E2.4 Upchurch N4/ls white/orange-pink. MB. 60-130. Although this vessel appears to fit with the date of the rest of the variant, it was found with the main Hoo dump, albeit unstratified, which would put its date around AD 60, Rare.

1E2.5 Upchurch N4/ls white/orange-pink. MB. 60-130. The above comments apply to this vessel, and are enhanced by its large size, a first-century trait. Its similarity in construction to 1E5 suggests that it is an early aberration which pre-dates the deliberate introduction of 1E2. Rare.

1E3 With flaring collar.

1E3.1 Upchurch N4/ls white/orange-pink. MB. 45/50-70/100. Blumstein 1956 no 7. Its generally pre-Flavian style (Southwark 1A2) agrees with that of the vessels it was found with. Rare.

1E4 With collar.

1E4.1 Upchurch N4/ls white/orange-pink. JD. 120/140-180/190. Rare.

1E4.2 Upchurch H4/ls white/orange. MA.120/140-180/190. Marked "Collectanea Antiqua Vol 1 pi IX fig 12". Mid-late second century dates at Ospringe (35). Early second dates elsewhere (Whiting and Mead 1928, 727). Rare.

1E5 'Hofheim' type flagons with cup mouth.

Vessels in this style were also made at Eccles (Detsicas 1977a, fig. 3.2). 1E5.1-4. Upchurch JT4/ls white/orange-pink. 45/50-70/80. A Claudio-Neronian form (Cam 140d). 1E5.4 has a twisted rim. Common.

1E5.5 Upchurch N4/ls white/orange-pink. Probably the same date as the other 1E5's. It should perhaps be in variant 1E3, the ring-mouth is however an exaggeration of the standard collar. The rim is twisted. Rare.

1E6 Ring-necked.

1E6.1 Upchurch N4/ls white/orange-pink. JD. 100-200. Rare. A third century date could be given by analogy with 1A1. Most of the "JD" finds were however mid second century in date.

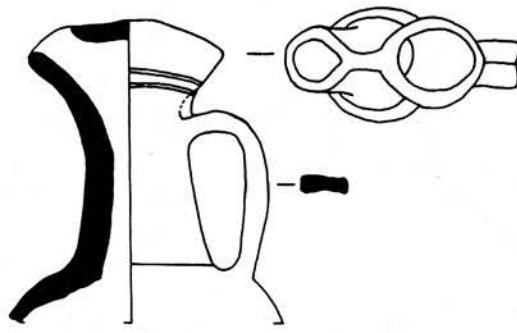
1E7 Disc mouthed.

1E7.1 Upchurch N4/ls white/orange-pink. JD. 100-150. Rare.

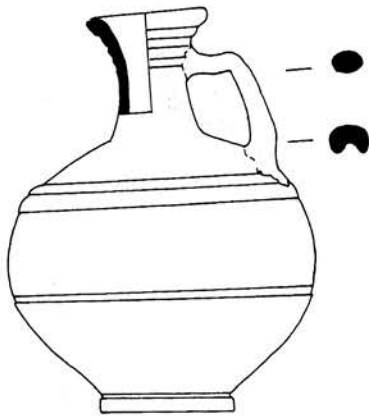
Unclassified.

1E0.1 Upchurch N4/ls white/orange-pink. MA. 100-150. Vessel is lopsided and has two small holes in the base. Equivalent to Verulamium products (Southwark 1B4). Unique.

1E0.2 Upchurch N4/ls white/orange. RW 281. 50-150. Unique.



1D0.1



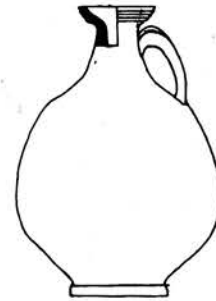
1E1.1



1E1.2



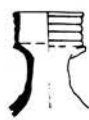
1E1.3



1E1.4



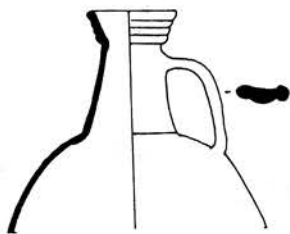
1E2.1



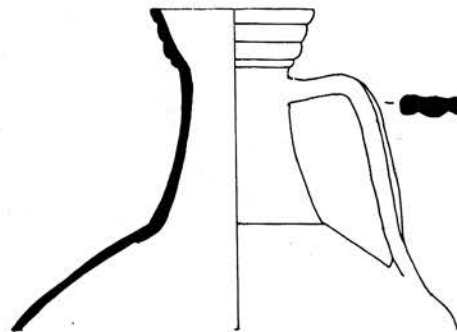
1E2.2



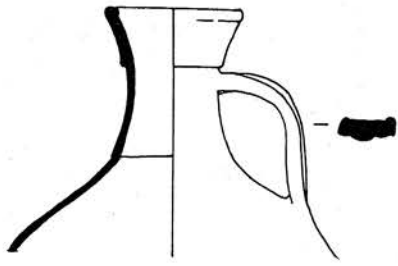
1E2.3



1E2.4



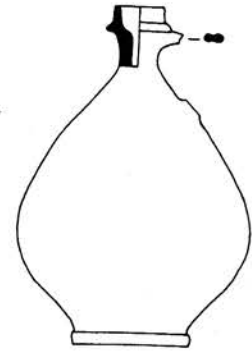
1E2.5



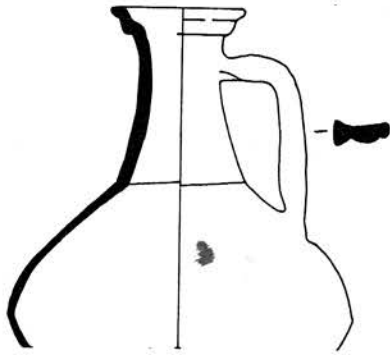
1E3.1



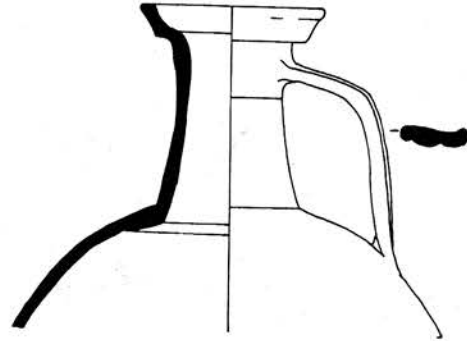
1E4.1



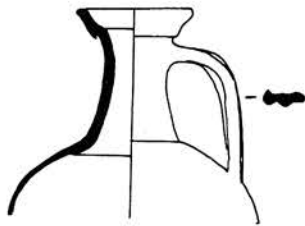
1E4.2



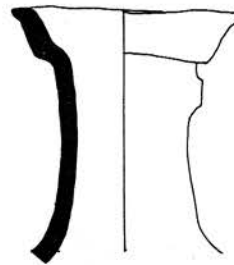
1E5.1



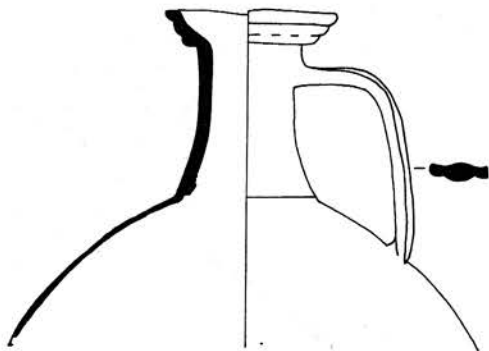
1E5.2



1E5.3



1E5.4



1E5.5



1E6.1



1E7.1

1E0.3 Upchurch N4/l_s white/orange. MB. 45/50-70/80. Common base to vessels at Hoo Island, in particular 1E5. 25% of all vessels had a three-finger swirl on the base (Blumstein 1954 fig 7, no 9). Distinguished from 1E0.4 by square foot-ring.

1E0.4 Upchurch N4/l_s white/orange-pink. JD. 70-150. A simpler, smaller and later base for variants 1E1 and 1E2. Common.

1E0.5 Upchurch N4/l_s white/orange-pink. JD. 70-150. Common handle type for 1E1 and 1E2 vessels.

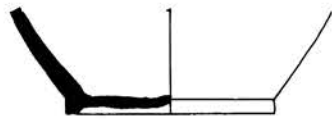
1E0.6 Upchurch S3/1. JS. p3/d7. 50-100. Neck type is unknown and vessel has a large wasting spall. Rare.



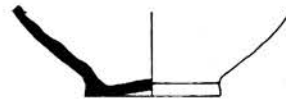
1E0.1



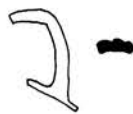
1E0.2



1E0.3



1E0.4



1E0.5



1E0.6

[To Contents page](#)