

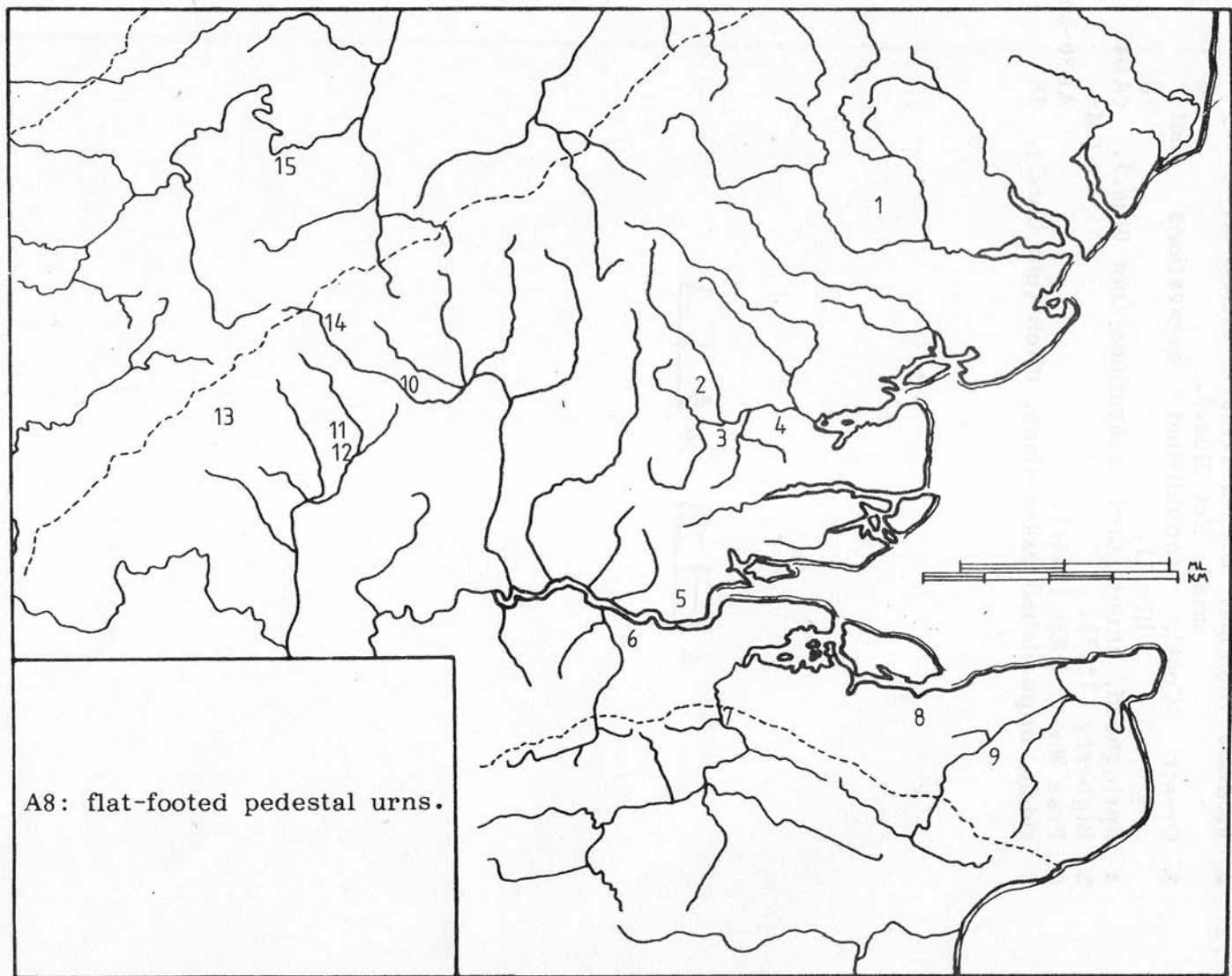
A8: FLAT-FOOTED PEDESTAL URNS

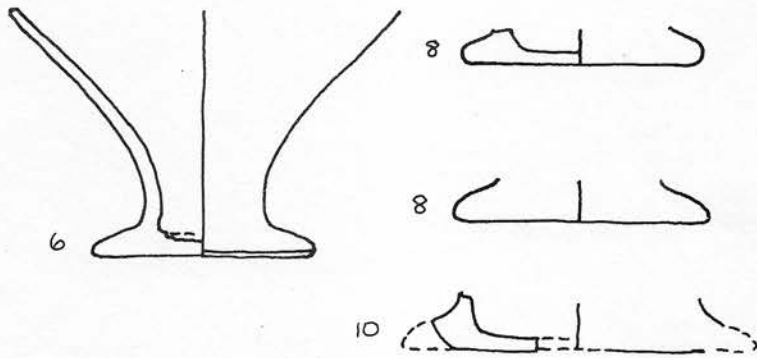
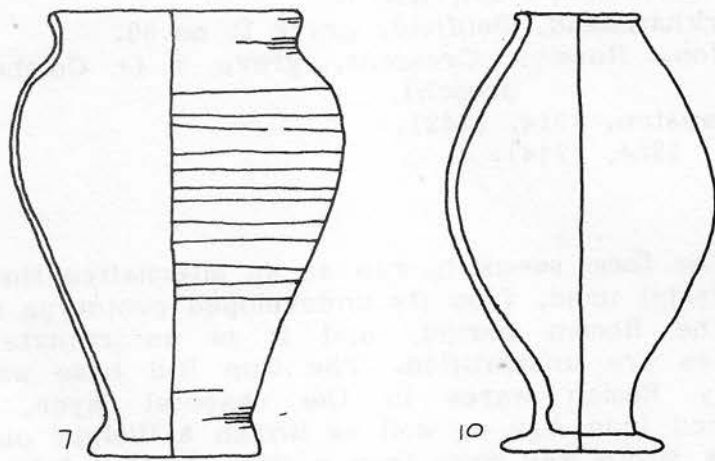
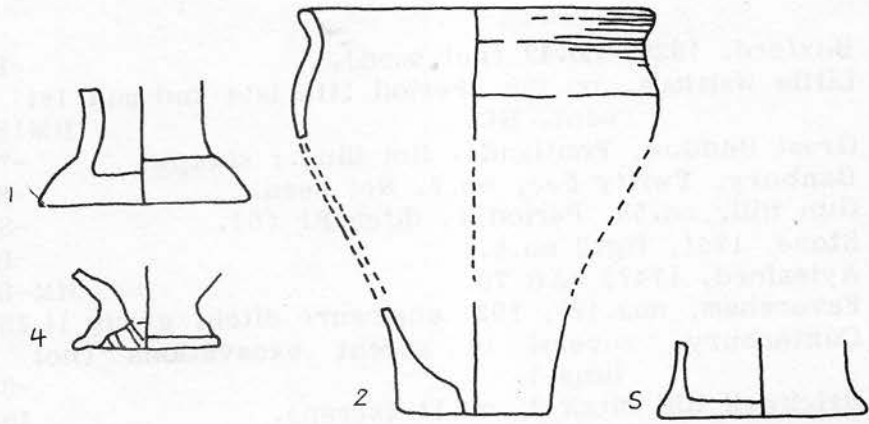
This is not in the Camulodunum type series, but it is not uncommon, and is not confined to poorly-made vessels meant to be of other forms.

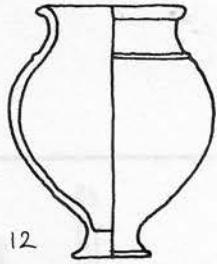
1	Boxford, 1926, no.42 (not seen).	-B	○
2	Little Waltham, no.286. Period III, late 2nd-mid 1st cent. BC.	HM1S	●
3	Great Baddow, Pontlands. Not illus.; scrap.	-?	●
4	Danbury, Twitty Fee, no.2. Not seen.	-S	○
5	Gun Hill, no.58. Period 4, ditch F1 (S).	-S	●
6	Stone, 1941, fig.2 no.6.	-B	●
7	Aylesford, [747] =AB 70.	HM-B	△
8	Faversham, nos.191, 192: enclosure ditch, group II 2S		●
9	Canterbury, several in recent excavations (not illus.).	-S	●
10	Brickwall Hill ditch 2, no.11 (scrap).	1S	●
	ditch 3, fig.2 no.13.	2S	●
11	St. Albans, King Harry Lane, several (not illus.).	-B	●
12	Verulam Hills Field, no.20.	RB	△
13	Berkhamstead, Dellfield, grave 1, no.60.	1B	○
14	Luton, Rosslyn Crescent, grave 3 (+ Colchester brooch).	1B+	○
15	Kempston, 1914, [742].	-B	▲
	1904, [744].	-B	▲

Notes

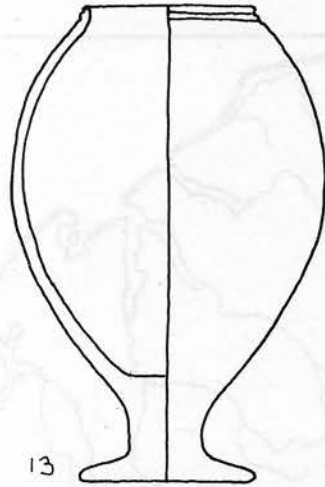
The form seems to run as an alternative throughout the life of pedestal urns, from its undeveloped prototype at Little Waltham into the Roman period, and it is unfortunate that so many examples are unstratified. The Gun Hill base was with late 1st century Roman wares in the charcoal layer, and the ditch contained Iron Age as well as Roman & 'Belgic' pieces. The Great Baddow scrap may come from a much shattered burial, including a butt-beaker. The Sheepen type trays in CM have 2 examples, both in Roman fabrics: one hard grey, the other red and sandy.



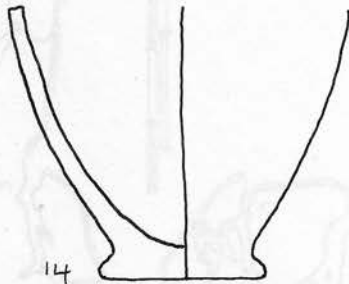




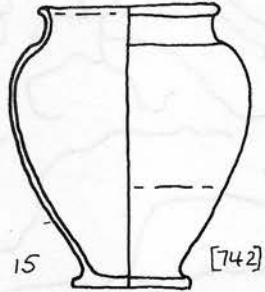
12



13

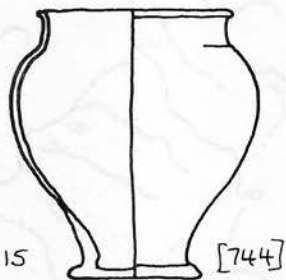


14



15

[742]



15

[744]