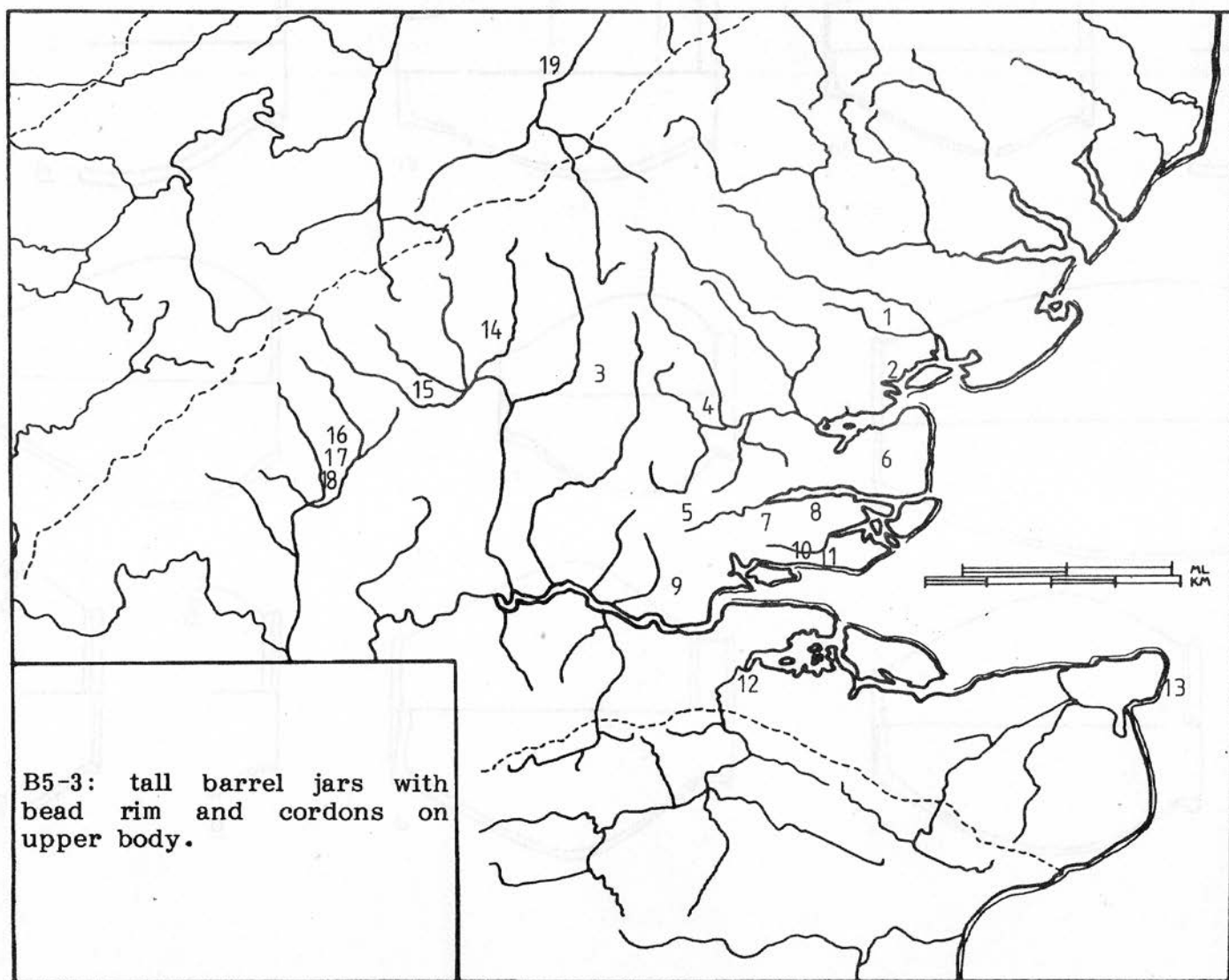


B5-3: TALL BARREL JARS WITH BEAD RIMS
AND CORDONS ON UPPER BODY

1	Colchester, Sheepen, Cam.117; total 4, two in III. pl.LXXVI, A; period I, site L4.	AD43-48	●
		AD10-43	●
2	Peldon, Red Hill.	-S	○
3	Little Hallingbury (lost).	-B	○
4	Broomfield, no.17. Residual.	-S	●
5	Billericay [828] =AB 199.	-B	●
6	Southminster [1083].	1B	●
7	Rayleigh, Hamborough Hill [1140] =AB 163.	HM-B	●
8	Canewdon, extras [1200].	-B	●
9	Orsett, AB 198.	-B	●
10	Prittlewell, Roots Hall [221].	RB	△
11	Southend, Marine Parade [1199].	-B	●
12	Rochester [64].	-	●
13	Broadstairs, Dumpton Gap 1907 [1518], [1521].	-S	●
14	Braughing, 1972 early features, one (not illus.). Henderson Coll. (not illus.).	-S	●
		-S	●
15	Welwyn Garden City main grave, no.19.	2B+	●
16	St Albans, 'Brescia' Field, no.2.	Claudian	●
17	Verulam Hills Field grave I no.1A.	1B	○
18	Little Munden Farm kiln, no.253, ditch 4.	AD55-75	●
19	'Near Cambridge' [790] .. Roman.	-	△

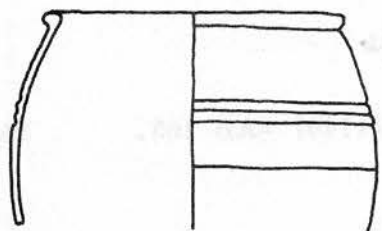
Notes

This is less stereotyped than the other tall B5 forms, but still has very little to do with copies of imported butt-beakers. The date range is from the later 1st century BC (Welwyn Garden City) to the second half of the 1st century AD; it is mostly found in burials, and its true range is probably only just past AD 43. The Cambridge pot is in the local hard sandy fabric. Cf. Hatt 1949 pl.VII no.2: La Tene III.

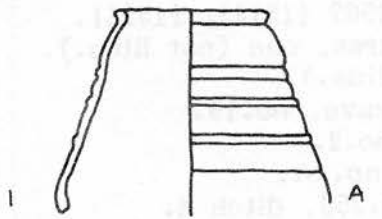
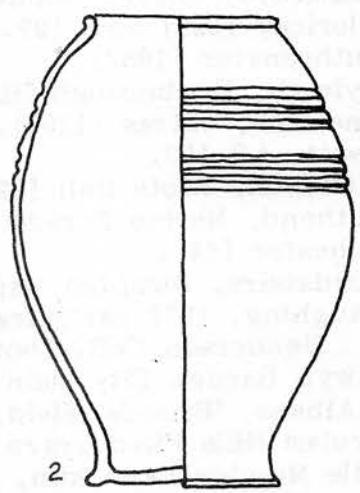


100-1000 B.C. EARLY BRONZE AGE
ARTIFACTS FROM THE
MOUND AT WYOMING

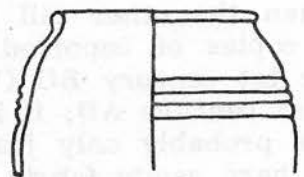
1. 100-1000 B.C. EARLY BRONZE AGE
ARTIFACTS FROM THE
MOUND AT WYOMING



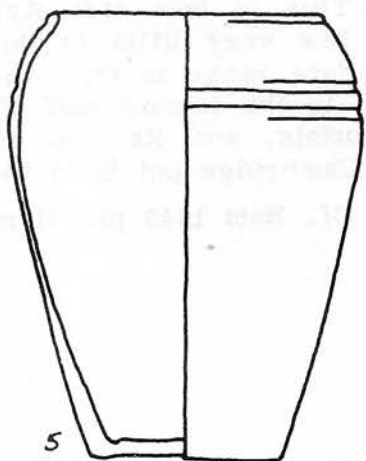
117



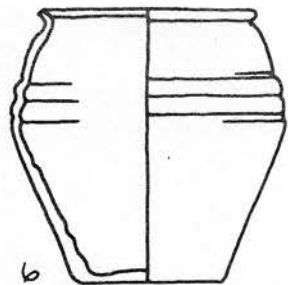
A



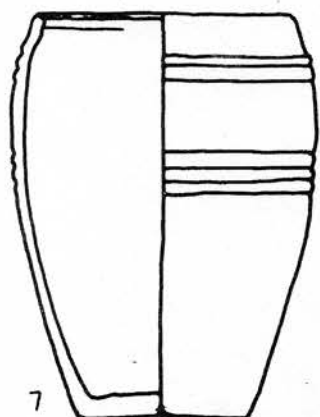
4



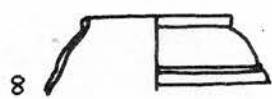
5



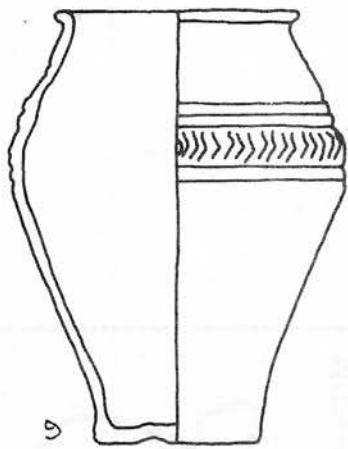
6



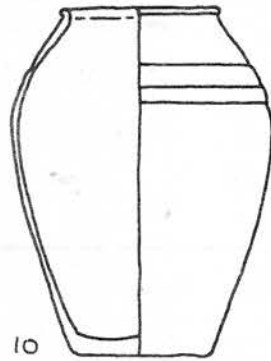
7



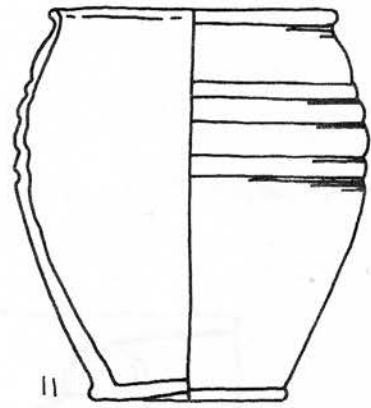
8



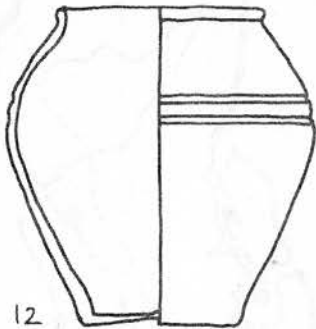
9



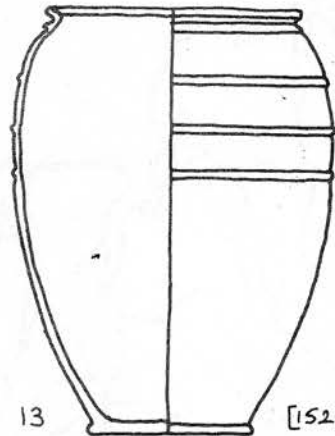
10



11

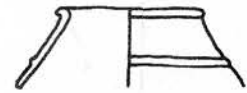


12



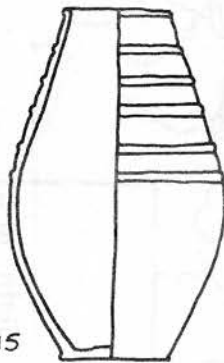
13

[1521]

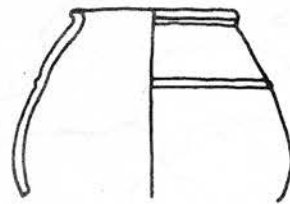


13

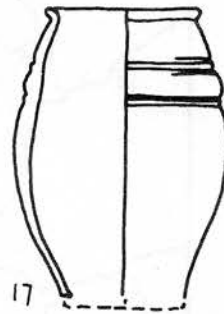
[1518]



15



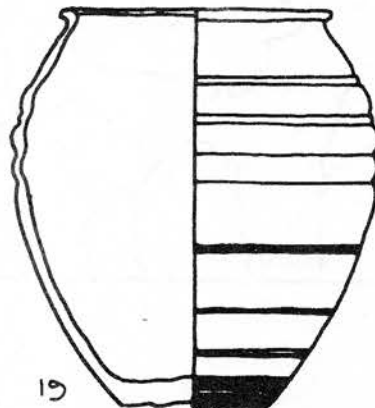
16



17



18



19