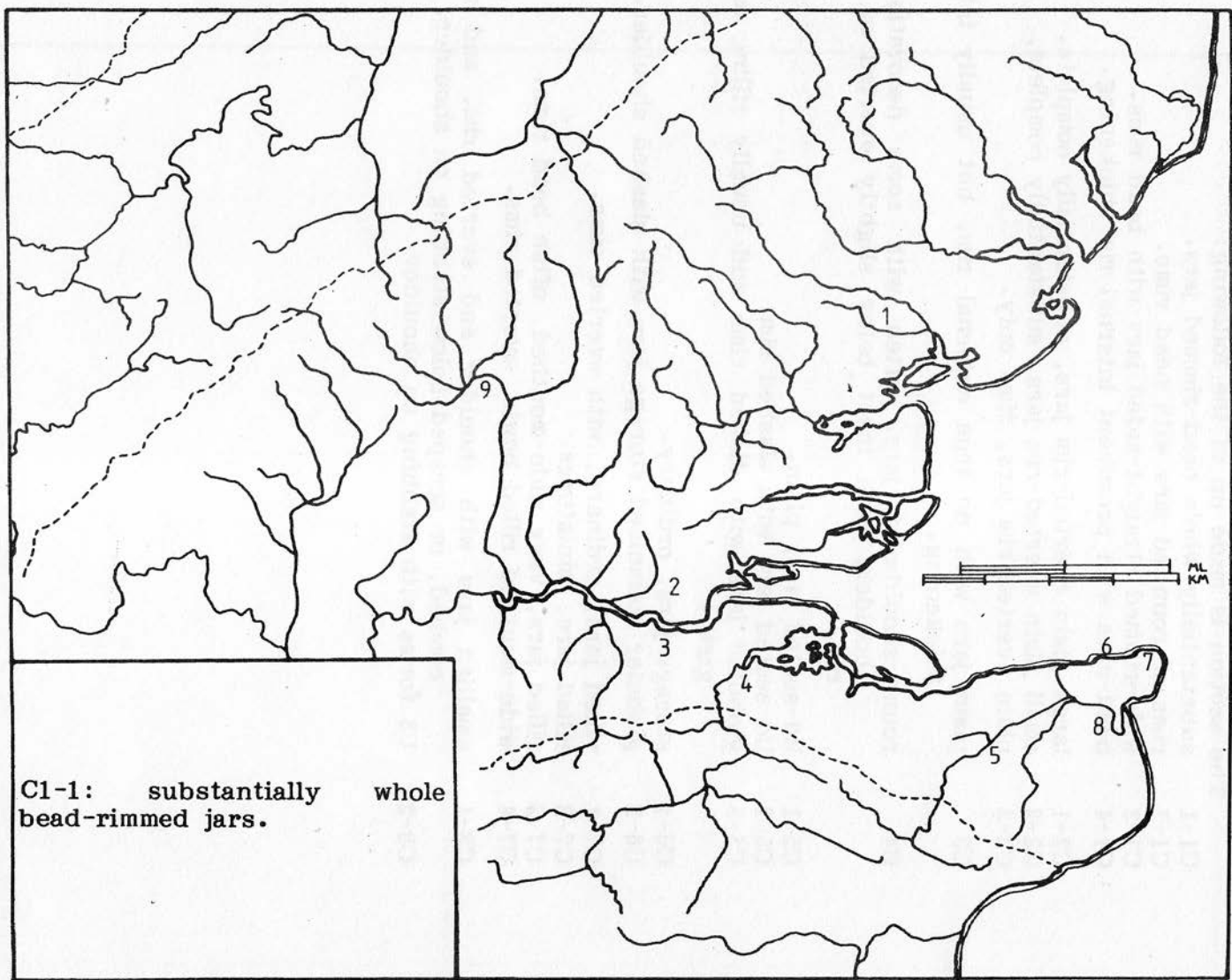


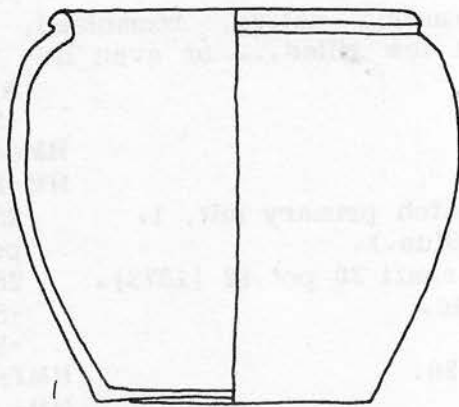
C1-1: SUBSTANTIALLY WHOLE BEAD-RIMMED JARS Often rilled and combed.

1	Colchester, Sheepen, Cam.257. Roman; total 22; 'rarely furrowed'. Cam.259, very common: native, romanised, Roman; 'a few rilled... or even lid- seated'.	AD43-65 AD10-65	△ ●
2	Orsett churchyard.	-S	∅
3	Springhead (not illus.).	HMcAD45	∅
4	Rochester, 1860 [1526].	HM-B?	●
5	Canterbury, Rose Lane ditch primary silt, 1. Watling St pit (not illus.).	2S post-43	▲ ○
6	Birchington, Minnis Bay shaft 30 pot 12 [1373].	2S+	●
7	Margate, BM 1926/10-19/46. [35].	-S -S	● ●
8	Richborough no.136, pit 20.	HMfrom AD43	○
9	Hertford Museum [1056].	HM-	●

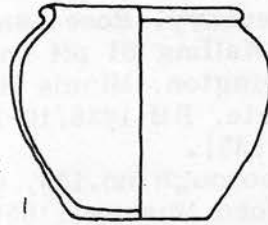
Notes

A common east Kent form, but the local very hard fabric was used, and this may account for the survival of whole specimens there; compare the map with C1-2. Existing contexts indicate a date either side of the Roman conquest. The Hertford Museum specimen is possibly from the Welwyn Grange cemetery, which is also post-conquest. Some pre-conquest specimens are known, however, at least in east Kent (Canterbury; Birchington).

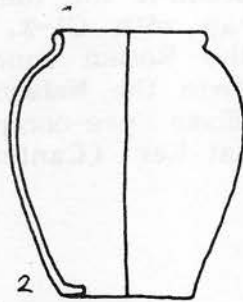




257



259



\*small scale  
< 1:4

