

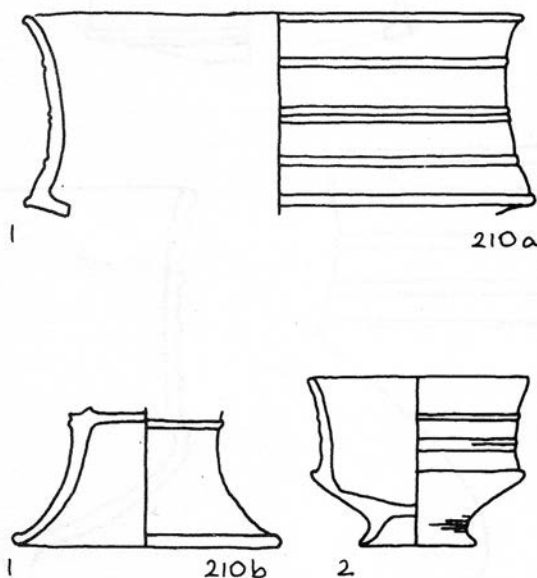
F3-4: PEDESTALLED VERSION OF E1-2

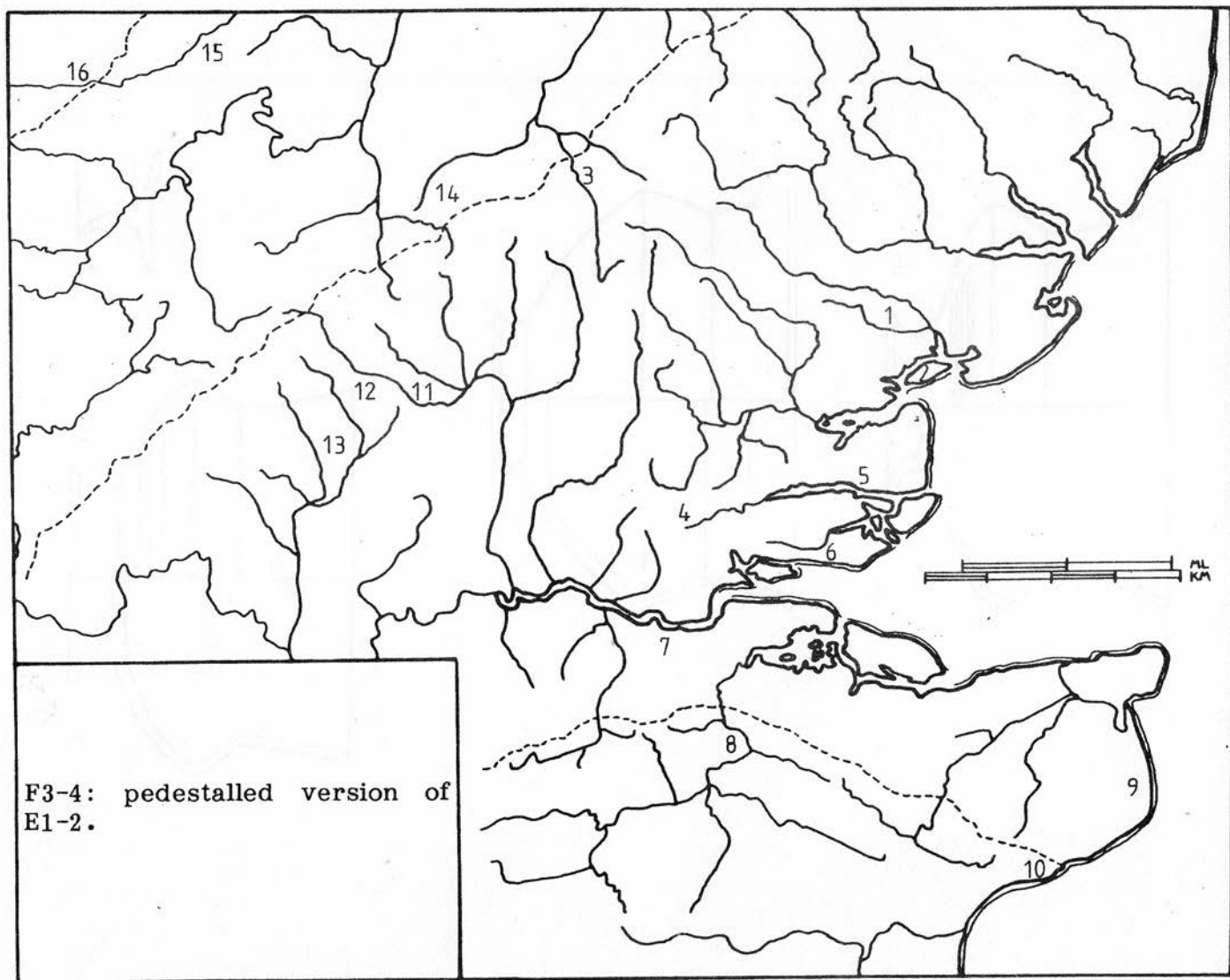
The commonest of pedestalled bowl forms, and as widespread as E1-2.

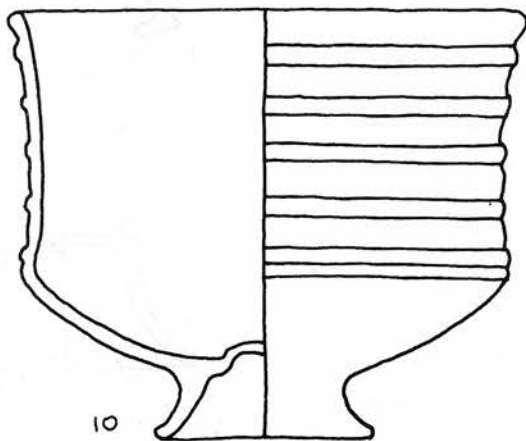
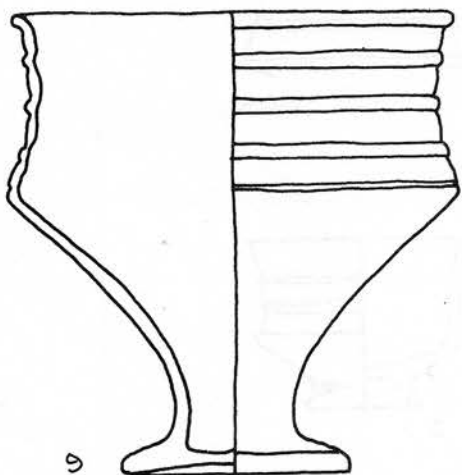
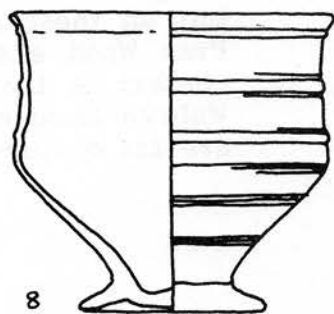
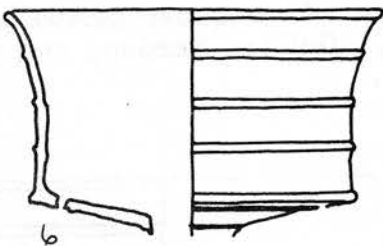
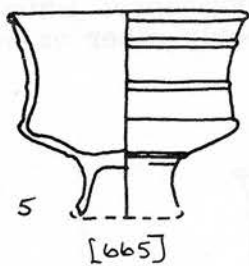
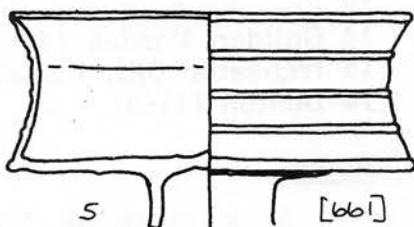
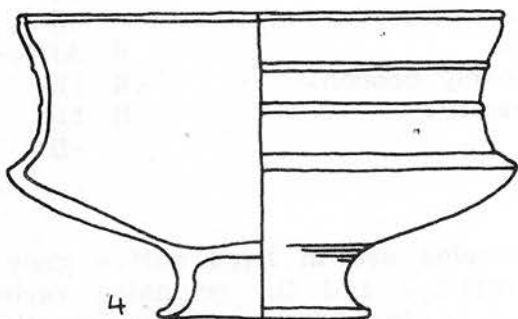
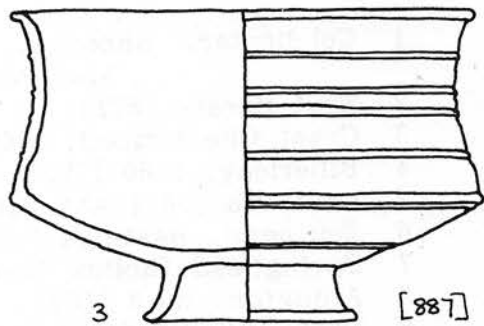
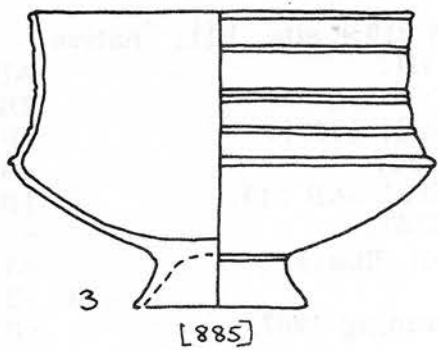
1 Colchester, Sheepen, Cam.210: site F11, native.		
	Also Period III.	AD10-43 ●
2 West Mersea [873].		2B ●
3 Great Chesterford, 1846 [885], [887].		-B ●
4 Billericay, 1860 [793] =AB 166.		-B ●
5 Creeksea [661] =AB 216; [665] =AB 215.		1B ●
6 Southend, Hastings Road [216].		- ●
7 Springhead (hollow base; not illus.).		cAD45 ●
8 Allington, no.3 [183].	R	-B ●
9 Deal, Mill Hill (Ogilvie & Dunning 1967).		-B ●
10 Cheriton, no.31.		-B △
11 Welwyn Garden City main grave, no.18.		2B+ ●
12 Wheathampstead, Wheeler's no.7.		-S ●
13 Prae Wood, group D, no.3.	R	AD30-50 ●
14 Guilden Morden [881], + early brooch.	R	1B+ ●
15 Irchester Ciii, burial 1, no.39.	R	2B ○
16 Duston [1169].		-B ●

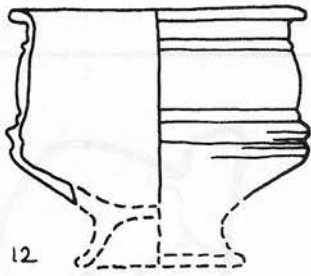
Notes

At Sheepen all the examples are in hard native grey grog. Note the internally hollow variety, and the omphalos variety, of base in Kent. A few of those on the fringes are apparently post-conquest: the Irchester pot resembles locally-made girth beakers -but all these are essentially a native pre-conquest form. The late Prae Wood example is also typologically late; the Springhead pot's context is the result of conquest period site clearance; while the Welwyn Garden City, Guilden Morden, and probably other examples are 1st century BC.

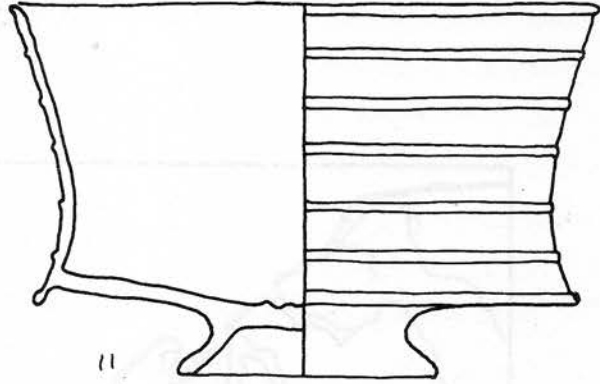




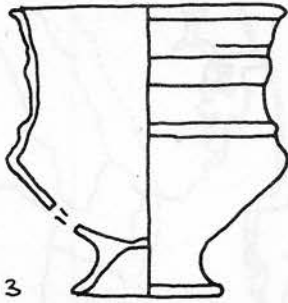




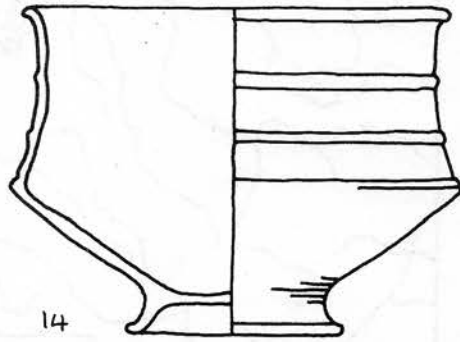
12



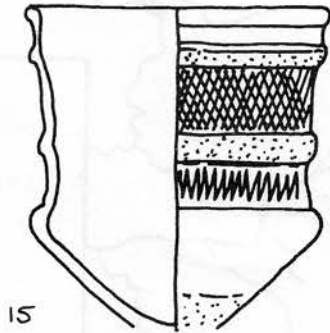
11



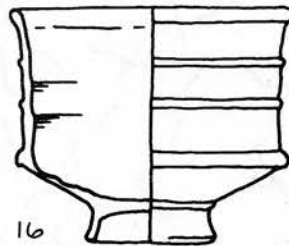
13



14



15



16