

TYPE 13 SPOUTED VESSELS.

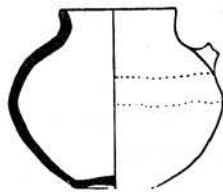
Extremely uncommon, although there are also a few vessels of other types converted by the addition of a spout.

13A1.1 Upchurch S3/lb. MW 5 UC 7. 50-100. Burnished on top and on lower parts. Unique.

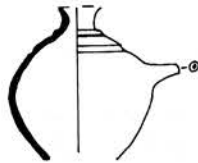
13B1.1 Shorne S1/5b. MA, 1846. 80-120. Richborough 325 is dated 80-120. Rare.

TYPE 14 MISCELLANEOUS FORMS.

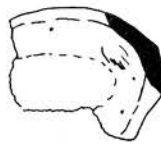
14A1.1 Cooling S3/6h. MC.RQ. 50-70. This sherd is asymmetrical, possibly coming from a triangular or kidney-shaped vessel. The extant 'corner' is chipped and originally carried higher. Its possible use i.e. open to conjecture. Unique.



13A1.1



13B1.1



14A1.1

